

# SANY

Quality Changes the World

# SAFETY FAST CHARGING STRONG POWER INTELLIGENT



WAREHOUSING AND LOGISTICS

# SANY

#### SANY Robot Technology Co., Ltd.

Address: Building 21, East Factory Area, SANY Industrial Park, Changsha County, Changsha City, Hunan Province, China

Zip code: 410100 Tel: 400-810-0318

Note:  
all products are available in all markets. As part of our continuous improvement process, we reserve the right to modify specifications and designs without giving prior notice. The figures may contain additional options.

© Printed in China, March 2025 Edition

HEX-SY215-0202-10-EN-VI



### SANY Lithium Battery Counterbalanced Forklift

# SCPC6

**1 Hour**  
Achieve 0-90% fast charge  
Low voltage version: 1.5 hours

**24-hour**  
Continuous operation

**5 Years**  
Breakthrough ultra-long warranty  
period in the industry

**IP67**  
Equivalent EIC IP rating for  
electric vehicles

**Compact Drive Axle**

**High rotational speed and low noise**

Equipped a silent motor with a rotational speed over 10000 rpm

**High transmission ratio**

The maximum transmission ratio up to 50

**Small size**

The gearbox size is reduced by 50% compared to the conventional one

**Strong power**

Gradeability with full load>20%

**Large load capacity**

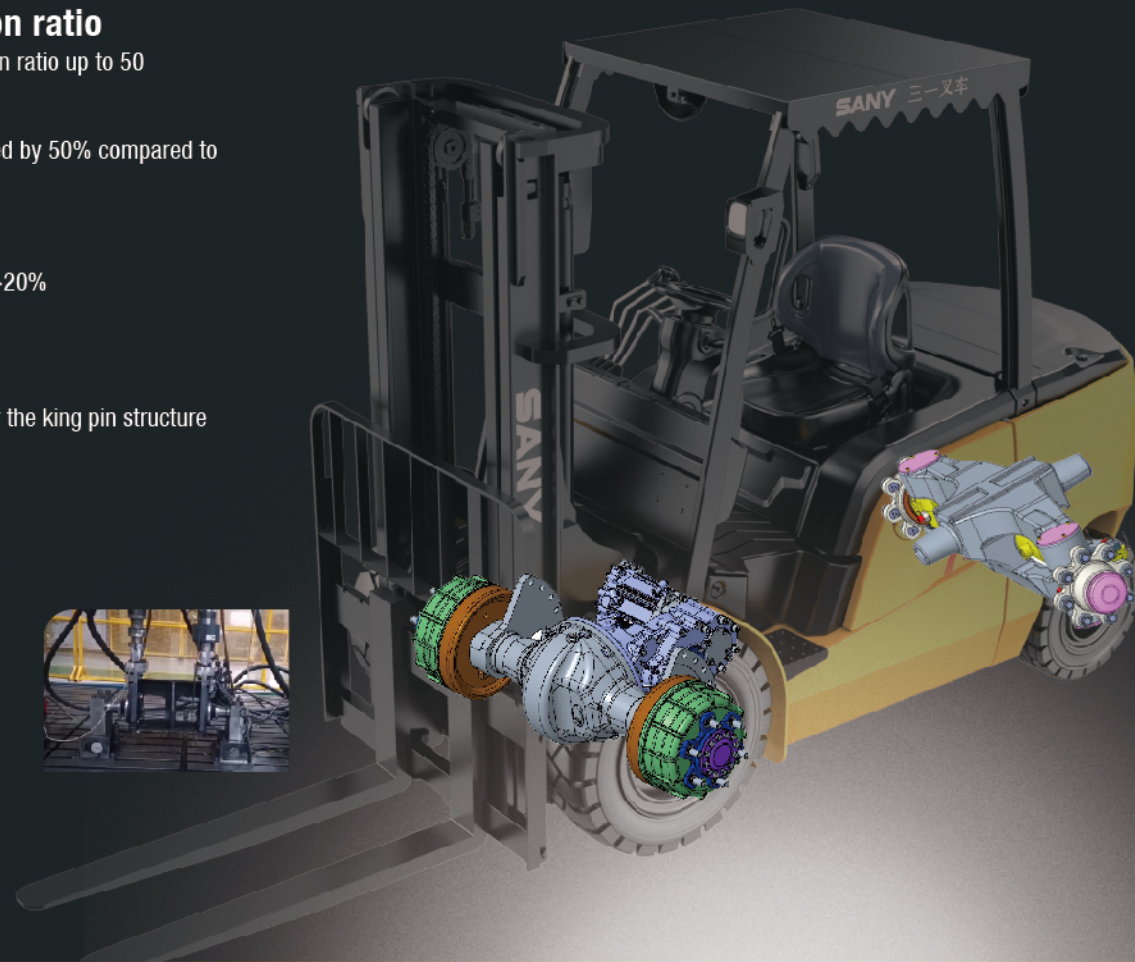
- Integrated cast axle
- Tapered roller bearing for the king pin structure

**Large turning angle**

Small turning radius

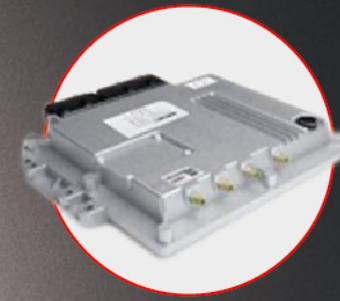
**High reliability**

Design life exceed 20000h



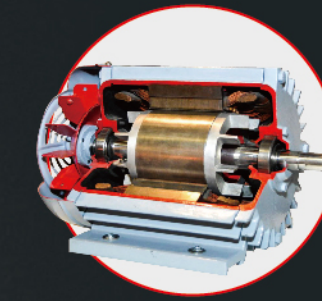
**Outstanding Performance**

Perfect integration of electric vehicle technology with forklifts, fully replacing traditional fuel-powered options.



**Automotive-grade VCU**

Self-developed dual-core VCU offers powerful computing capabilities with millisecond response time for superior control



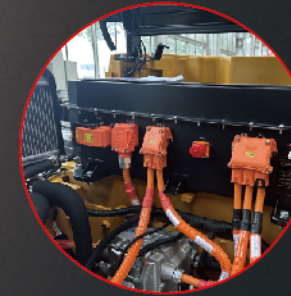
**Automotive-grade motor**

Permanent magnet synchronous electric drive delivers greater power and performance



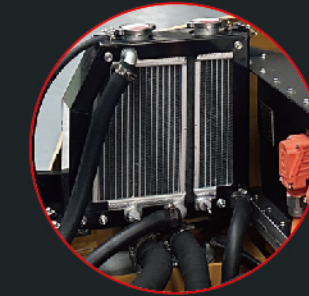
**Automotive-grade protection**

IP67 for core electric components and IPX4 for the entire forklift



**Automotive-grade cable**

Neat harness, more reliable and easier maintenance



**Automotive-grade water cooling**

No fear of high temperature conditions

**Energy Saving and Cost Reduction**

**10-20%** Comprehensive energy saving

**30%** Save costs compared to traditional electric forklifts

2 SANY electric forklifts



3 fuel-powered forklifts in terms of economic benefits



**Automotive-grade integrated lithium battery**

**High safety**

Automotive-grade power cells (lithium iron phosphate) and electrical components, the battery management system can detect and report faults in real time to the instrument and cloud intelligent platform for safe protection.

**Fast charging**

Adopt national standard charging, compatible with vehicle charging piles for convenient charging. The fast charging mode is suitable for multi-shift operations.

**Long service life**

Enjoy an ultra-long warranty period of five years or 10,000 service hours for worry-free use.

**Strong environmental adaptability**

IP67 protection level, allowing operation in rainy and snowy days: standard battery heating function, ensuring normal operation in low temperature environment.

**Economy**

Lithium batteries, no manual maintenance required: the overall operating cost is low.

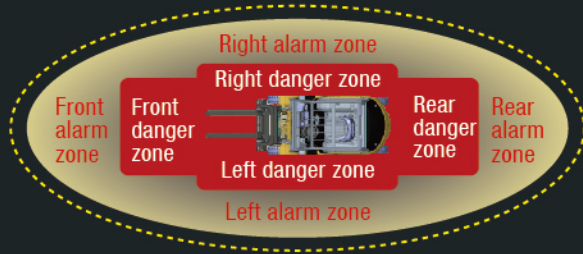
**High efficiency**

High performance liquid cooling system with low heat loss and high power conversion rate, achieving high-rate discharge and strong power.

## High Safety and Reliability

Ultra-long warranty, worry-free use:  
Warranty period of five years or 10,000 service hours for EIC

Active safety system (optional):  
Detect human movement and anticipate hazards with alerts



High-precision facial recognition system (optional):  
Ensure drivers are licensed  
Driver dynamic sensing system (optional):  
Avoid drowsy driving



Intelligent facial recognition  
DMS monitoring  
Multi-channel camera around-view monitoring



## Convenient Maintenance

It takes only one minute to reach any part to be maintained. Reasonable component layout ensures all components are within easy reach after the shell is removed, making maintenance more convenient.



## User Experience Friendly

Powerful acceleration, smooth parking, and hill assist make operations easier, more precise, and more efficient.



Industry-leading wide-visibility mast



Shock-absorbing seats to eliminate fatigue, equipped with OPS switch and seat occupancy sensor



Smart Touch Dashboard  
Standard intelligent instrument  
7-inch large screen (F/C7)  
Support multiple languages

## Intelligent Service

Intelligent cloud monitoring allows for fleet management, remote fault diagnosis, etc.



Equipment distribution is clearly visible



Critical alarms at a glance



Timely alerts for equipment malfunctions



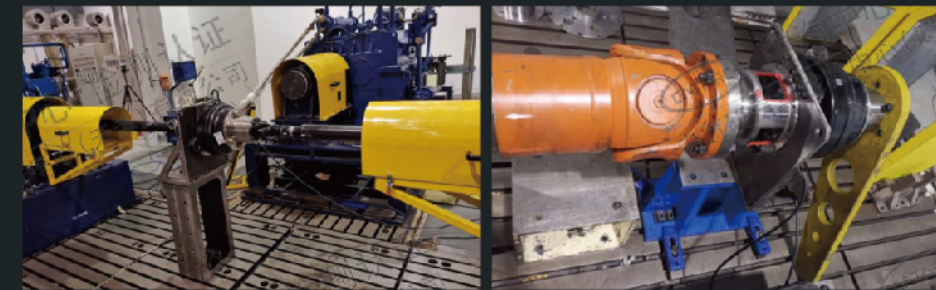
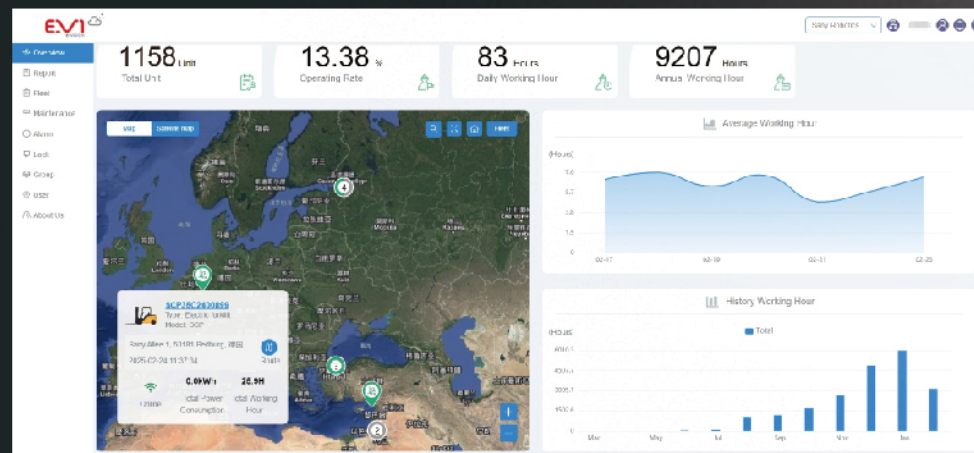
Maintenance reminders sent on schedule



Convenient download of user manuals



Multi languages available



Successfully passed the 300,000-cycle test with 6 times the rated load



The battery's vibration resistance, protection performance, charging, and discharging capabilities were tested in accordance with automotive-grade standards and all met requirements.



800 hours of intensive testing



**Full marks passed the wading test**



**Full marks passed the high-intensity rain test**



**Full marks passed the protective roof frame impact test**

Industry application cases



Plate



Stane



Chemical



Paper Packaging



Mold



Paper



Construction Industry



Car



Ceramics



Port



Graphite



Firework



Appliance



Fodder



Recycling



Drinks



Logistics



Materials



Smelt



Cold chain

# SERVICE IS CORE COMPETITIVENESS

With relentless attitude, employ every conceivable means, and deliver unparalleled service.

- + Exceeding Customer Expectations: By providing customers with exceptional service, SANY will maximize the value of each customer's equipment. With relentless attitude, employ every conceivable means, and deliver unparalleled service.
- + Exceeding Industry Standards: By implementing the highest service standards in the industry, SANY will achieve the highest level of customer satisfaction.



- + **Proactive Service (Green Action)**  
Search and locate machines, inspect machines, resolve issues, and respond to other needs to enhance customer satisfaction.

- + **Customer Complaints**  
24/7 available  
Direct communication with the Chairman's office Ensure customer satisfaction.

- + **Lifetime Commitment**  
Provide full life-cycle service and accessory supply for equipment.

- + **24/7 Service**  
Rapid response mechanism for quickly resolving customer issues regardless of cost.





**No.1**  
Brand of Concrete Machinery

**468th**  
In Forbes Global 2000 List

**46**  
Lighthouse Plants Worldwide

**4+**  
R&D Centers

**300+**  
Dealers

**900**  
Parts Warehouses Outside China

**180+**  
Sales Regions & Countries

**650+**  
Service Sites