

SANY

SCP30/35F7

**LITHIUM-BATTERY
COUNTERBALANCED
FORKLIFT TRUCK**

SANY

QUALITY CHANGES THE WORLD

SANY Robotics Technology Co., Ltd.

Address: No. 21, East Factory, Sany Industrial Park, Changsha County, Hunan Province

Postcode: 410100 Tel: 400-810-0318

Due to continuous technical updates, technical parameters and configurations are subject to change without notice. The machine in the picture may include additional equipment. This album is for reference only, subject to actual product.

SANY FORKLIFT



www.sanyroboticsglobal.com





F7 Series Lithium-Battery Counterbalanced Forklift Truck

Main features

Superior performance

- The industry's first 96V eight-in-one powertrain with liquid cooling for continuous and efficient operation
- Powertrain, battery and core electrical components with protection level of IP67, and vehicle with protection level of IPX4
- Driving speed >16km/h, gradeability >17%, leading the industry

Efficiency improvement

- Self-developed dual-core VCU with super computing power, millisecond response, strong driving control explosiveness
- Fast chargeable high performance battery, 20%-100% full charge in 1 hour (200A charger)
- Permanent magnet synchronous electric drive for high power and high efficiency

Safety and reliability

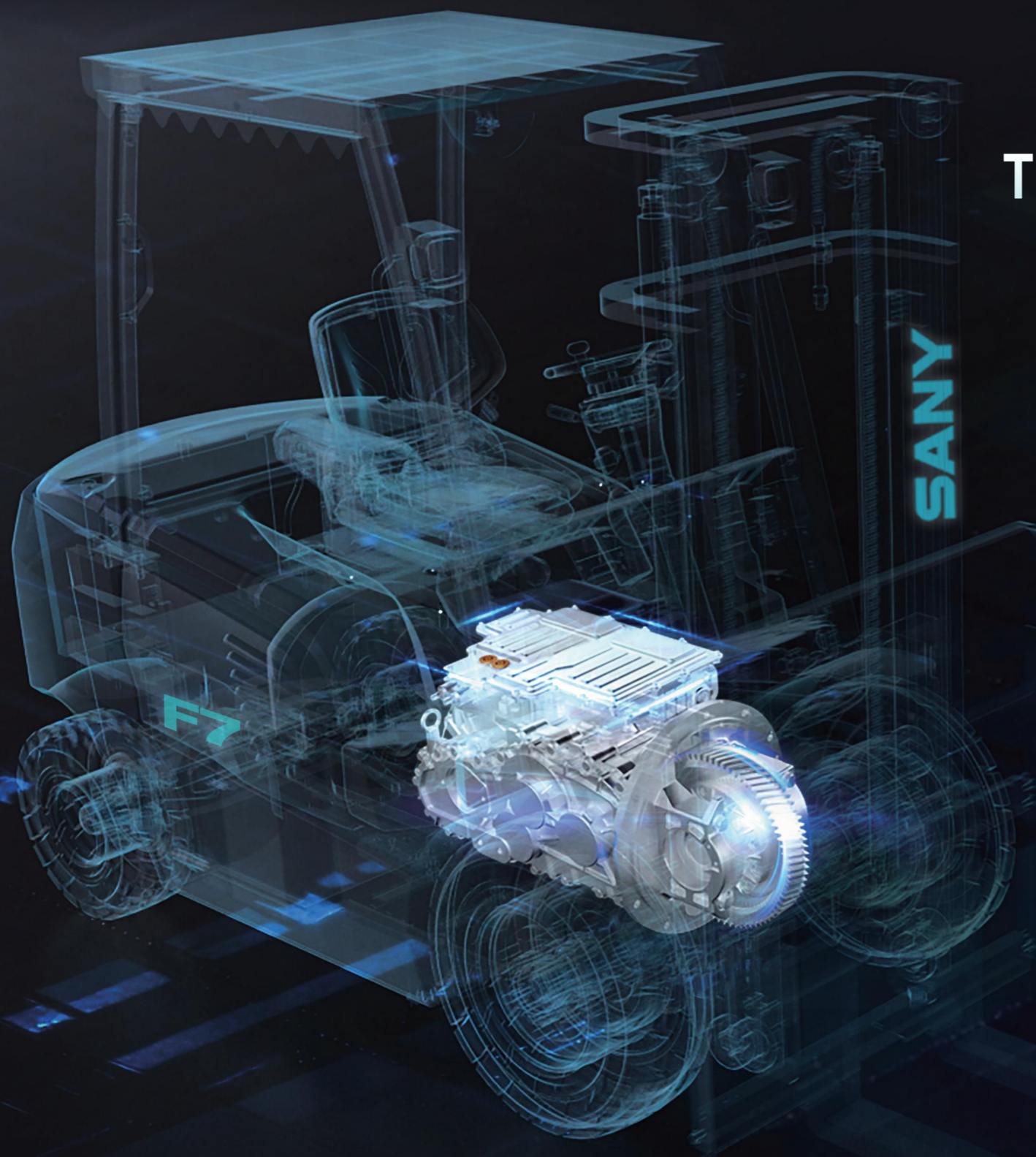
- Active safety system: Detect human movement and predict danger in advance for alarm (optional)
- High-precision face recognition system to avoid fatigue driving (optional)

Energy saving and cost reduction

- Powertrain structure for strong power, with vehicle energy consumption lower than that of the mainstream models in the market
- Meet the usage requirements of over 80% of the customers in light and medium working conditions
- Extremely high cost performance, with customer use and maintenance costs reduced by 1/3

Extended warranty

- Five-year or 10,000-hour warranty for battery and powertrain (one-year warranty for gearbox) for worry-free use



THE INDUSTRY'S FIRST 96V WATER-COOLED EIGHT-IN-ONE POWERTRAIN

Up to 15% lower energy consumption compared to mainstream electric forklifts

15%↓
Energy Consumption

Power performance increased by 10%
Gradeability (unladen) over 18%

10%↑
Performance

Simplified overall layout for reduced maintenance time

20%↓
Maintenance time

30% reduction in life cycle maintenance costs

30%↓
Maintenance cost

90% reduction in primary electrical ports
Improved waterproofing and reliability

90%↓
Interface

SAME CONFIGURATIONS WITH THOSE OF NEW ENERGY VEHICLES FOR EXCELLENT PERFORMANCE AND HIGH EFFICIENCY

Travel speed
> 16 km/h

Gradeability (laden)
> 17 %

Acceleration (laden)
4.5 s/10m

Full-load Lifting
350 mm/s

Voltage platform
96 v

Standard electric quantity
22.1 kw.h

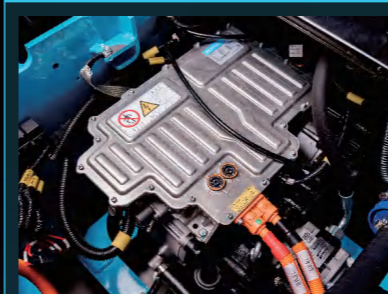


Domestic: the whole series meets the national standard charging protocol

Overseas: National standard, European standard, American standard charging protocols can be selected

*Charging pile subject to actual delivery

Automotive-grade powertrain



Joint R&D with INOVANCE
Automotive-grade 96V eight-in-one powertrain

Automotive-grade lithium battery



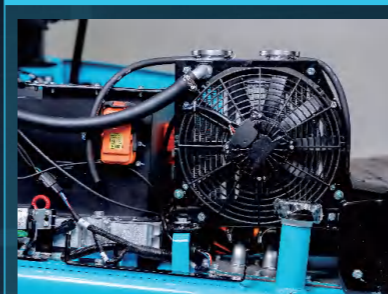
Industry first
Highly-integrated lithium battery with BMS for battery management

Automotive-grade wiring harness



Tidy wiring harness for high reliability and easy maintenance

Automotive-grade liquid-cooling



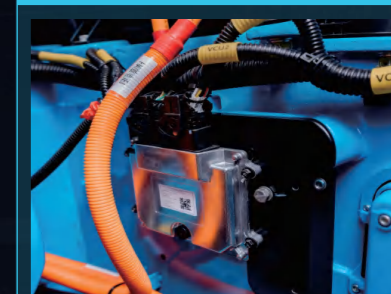
Eight-in-one, and battery equipped with automotive-grade liquid-cooling system
High-temperature adaptability and durability

Automotive-grade protection



Core electrical components with protection level of P67
Vehicle protection level of IPX4

Automotive-grade VCU



Self-developed dual-core VCU with super computing power
Forklift "brain", featuring millisecond response and quick acceleration

TO BUILD A HUMAN-VEHICLE-NETWORK SMART PLATFORM FEATURING INTELLIGENT HEALTH CHECK, MANAGEMENT, OPERATION, DRIVING, AND CONTROL

Intelligent health

Automatic diagnosis of three key E-drive systems and circuit; leverage deep operational data mining and AI-powered analytics for fault prediction and optimal performance assurance

Intelligent control

Remote over-the-air (OTA) upgrading, remote positioning and speed limit, remote encrypted immobilization

Intelligent driving

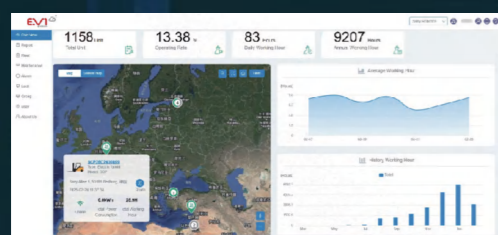
ADAS (advanced driver assistance system)

- 360 surround view
- Driving environment recognition
- Active protection
- Driving recorder

DMS (driver monitoring system)

- Face recognition
- Seat belt detection
- Fatigue driving identification
- Dangerous driving behavior identification

Intelligent Management (T_BOX)



The first independently-developed cloud platform in the forklift industry



Overseas EVI management platform

- After-sales intelligence
- Intelligent monitoring
- Visual management of equipment
- Fleet dispatching management

Intelligent Operation

- Mast lowering cushioning, cargo lowering cushioning and cylinder end cushioning
- Automatic turning deceleration
- Hydraulic system, anti-shock
- Ramp suppression system (optional)
- Charging protection, power failure protection, low battery protection
- Overload protection
- OPS (operator presence sensing) with seat-initiated speed limiting

7-inch touch screen



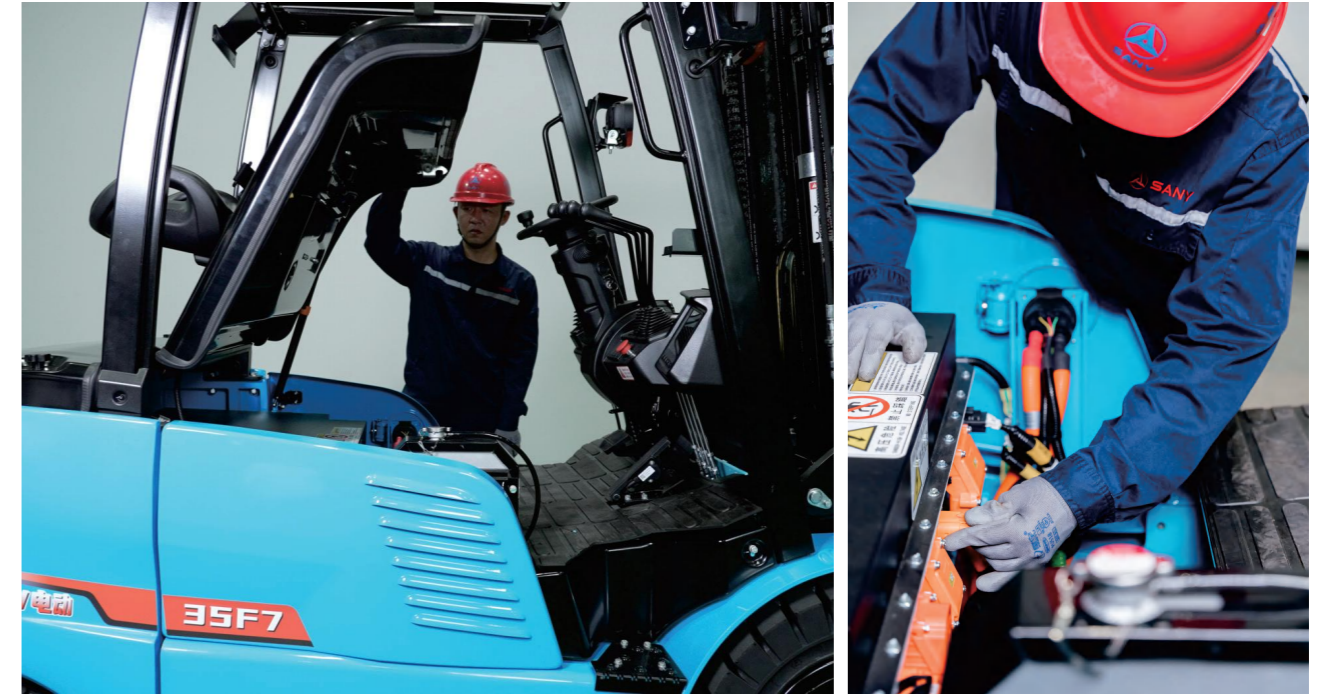
DRIVING COMFORT

- 01 Industry-leading super-large-vision mast for improved smoothness and hydraulic system, as well as high strength.
- 02 Shock-absorbing seat ensures a smooth ride regardless of terrain and reduces operator fatigue; the seat comes standard with an OPS switch for occupant presence sensing.
- 03 Standard 7-inch intelligent instrument touch display, with such functions as fault diagnosis, remote control, parameter customization, etc. Optional IC card.
- 04 Quick acceleration, smooth parking, and slope-assisted operation, to be simple, accurate and efficient.



EASE OF MAINTENANCE

Any position can be reached in one minute for maintenance with reasonable parts arrangement; all parts are within reach after removal of the cover for easy maintenance.



WORRY-FREE AFTER-SALES SERVICE

Exceeding Customer Expectations: By providing customers with exceptional service, SANY will maximize the value of each customer's equipment. With relentless attitude, employ every conceivable means, and deliver unparalleled service.

Exceeding Industry Standards: By implementing the highest service standards in the industry, SANY will achieve the highest level of customer satisfaction.



- **Proactive Service (Green Action)**
Search and locate machines, inspect machines, resolve issues, and respond to other needs to enhance customer satisfaction.
- **Customer Complaints**
Direct communication with the Chairman's office Ensure customer satisfaction.
- **Lifetime Commitment**
Provide full life-cycle service and accessory supply for equipment.
- **24/7 Service**
Rapid response mechanism for quickly resolving customer issues regardless of cost.