

SANY

SCP16/20S

**3-WHEEL LITHIUM-BATTERY
COUNTERBALANCED
FORKLIFT TRUCK**

SANY

QUALITY CHANGES THE WORLD

SANY Robotics Technology Co., Ltd.

Address: No. 21, East Factory, Sany Industrial Park, Changsha County, Hunan Province

Postcode: 410100 Tel: 400-810-0318

Due to continuous technical updates, technical parameters and configurations are subject to change without notice. The machine in the picture may include additional equipment. This album is for reference only, subject to actual product.

SANY FORKLIFT



www.sanyroboticsglobal.com





Cold storage handling



Narrow aisle stacking



Loading and unloading of carriage



Designed for narrow aisles Dedicated for cold storage handling

SCP16/20S
3 Wheel Lithium-Battery
Counterbalanced Forklift Truck

Main features



More Intelligent



Advanced Safety



Super Agile



Ergonomic Comfort



Wider Adaptability



Easier Maintenance



Superior Performance



Higher Efficiency

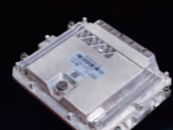
HIGH EFFICIENCY GOOD PERFORMANCE



96V platform
Double-drive permanent magnet synchronous motor
Low energy consumption



Automotive-grade electrical architecture
Three key E-drive system with protection level of IP67
Automotive-grade rigorous testing



Self-developed VCU
Dual-core VCU with super computing power (3.0)
Millisecond response for quick acceleration

High-performance integrated lithium battery



- Enable extended operation in environments as cold as -30°C (optional)
Applicable to cold storage conditions
- Standard battery heating function
Self-heating at low temperature
- High battery capacity retention at low temperature
High heating rate of electric heating
- Standard MSD service switch
Cut off the power supply with one key for maintenance safety

Tight-aisle performance

1.5^m

Rated for 1.6 tons with a 1.5 m load center
Turning radius

30%

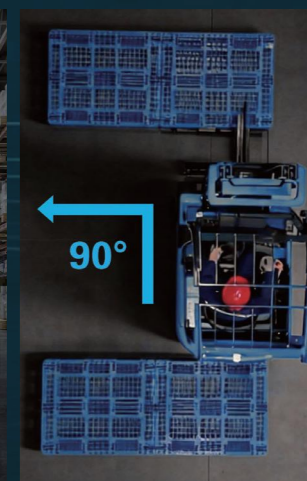
30% increase in space utilization
Applicable in a standard container

25%

Operating efficiency increased by 25%

90°

± 90° maximum steering angle (rear axle), capable of spot turning



1C fast charge (20%-95%, 22 kWh battery)

Domestic: the whole series meets the national standard charging protocol
Overseas: National standard, European standard, American standard charging protocols can be selected

*Charging pile subject to actual delivery

TO BUILD A HUMAN-VEHICLE-NETWORK SMART PLATFORM FEATURING INTELLIGENT HEALTH CHECK, MANAGEMENT, OPERATION, DRIVING, AND CONTROL

Intelligent health check

Automatic diagnosis of three key E-drive systems and circuit; deep data mining, AI-powered intelligent analysis, and predictive fault detection to ensure optimal operating performance.

Intelligent control

Remote over-the-air (OTA) upgrading, remote positioning and speed limit, remote encrypted immobilization

Intelligent driving

ADAS (advanced driver assistance system)

- 360 surround view
- Driving environment recognition
- Active protection
- Driving recorder

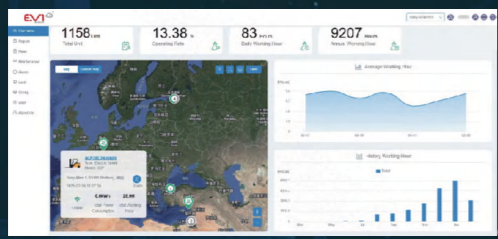
DMS (driver monitoring system)

- Face recognition
- Seat belt detection
- Fatigue driving identification
- Dangerous driving behavior identification

7-inch touch screen



Intelligent Management (T_BOX)



The first independently-developed cloud platform in the forklift industry

EVI management platform

- After-sales intelligence
- Intelligent monitoring
- Visual management of equipment
- Fleet dispatching management

Intelligent Operation

- Mast lowering cushioning, cargo lowering cushioning and cylinder end cushioning
- Automatic turning deceleration
- Hydraulic system, anti-shock
- Ramp suppression system (optional)
- Charging protection, power failure protection, low battery protection
- Overload protection
- OPS (operator presence sensing) with seat-initiated speed limiting

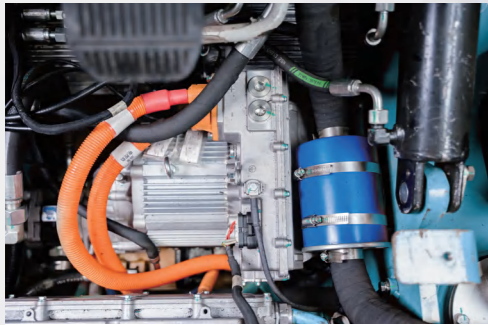


SAFETY AND RELIABILITY

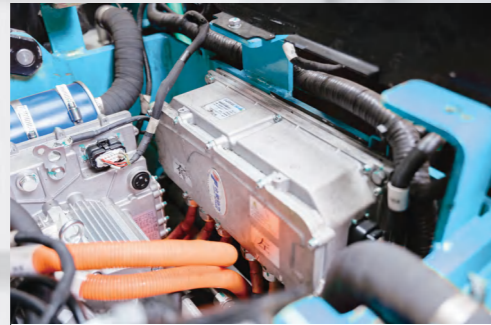
Electrical protection level of three key E-drive systems of IP67, being **Safe, reliable, and highly adaptable**

Multiple safety protections for three key E-drive systems, with **high-temperature detection and multiple insulation detection**

Extended warranty for three key E-drive systems of **5 years or 10,000 hours**



The first dual fuel tank system



The first integrated electric/pump drive system

CH-type channel steel mast: Reliable strength and durability

Standard mechanical valve operating lever: optional thumb switch or cross lever operating mechanism

Standard ZF hydraulic brake reducer: reliable and durable



Steering system

Hydraulic steering axle, with standard cornering deceleration function of angle sensor



Steering stability, anti-rollover



High-level lifting without load loss

COMFORTABLE DRIVING AND RICH OPTIONS

30% ↑
Driving space



Console options:

Proportional valve + double pedal



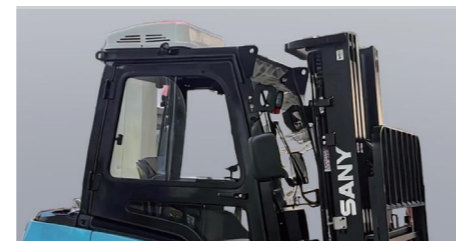
Seat options:

Quadruple fingertip control + suspension seat



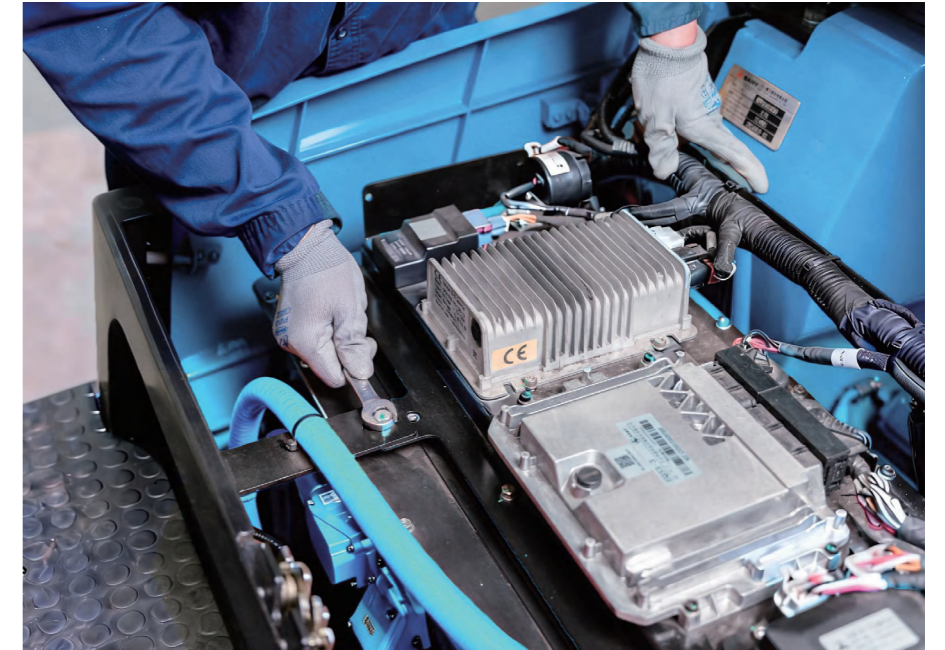
Cab options:

Fully enclosed cab + A/C



EASE OF MAINTENANCE

Any position can be reached in one minute for maintenance with reasonable parts arrangement; all parts are within reach after removal of the cover for easy maintenance.



WORRY-FREE AFTER-SALES SERVICE

Exceeding Customer Expectations: By providing customers with exceptional service, SANY will maximize the value of each customer's equipment. With relentless attitude, employ every conceivable means, and deliver unparalleled service.

Exceeding Industry Standards: By implementing the highest service standards in the industry, SANY will achieve the highest level of customer satisfaction.



■ Proactive Service (Green Action)

Search and locate machines, inspect machines, resolve issues, and respond to other needs to enhance customer satisfaction.

■ Customer Complaints

Direct communication with the Chairman's office Ensure customer satisfaction.

■ Lifetime Commitment

Provide full life-cycle service and accessory supply for equipment.

■ 24/7 Service

Rapid response mechanism for quickly resolving customer issues regardless of cost.