

SANY

SANY

QUALITY CHANGES THE WORLD

SANY Robotics Technology Co., Ltd.

Address: No. 21, East Factory, Sany Industrial Park, Changsha County, Hunan Province

Postcode: 410100 Tel: 400-810-0318

Due to continuous technical updates, technical parameters and configurations are subject to change without notice. The machine in the picture may include additional equipment. This album is for reference only, subject to actual product.

FOLLOW US : SANY FORKLIFT



www.sanyroboticsglobal.com



SANY WAREHOUSE TRUCK

PRODUCT MANUAL

SANY WAREHOUSE TRUCK

- Innovative integration
- Universal platform
- Leading intelligent technology
- Traditional features



SCB15/20W

Electric Walkie Pallet Truck(Economy)



Rated load
1.5/2t



Travel speed
4.9/4.9km/h (laden/unladen)



Gradeability
6%/10% (laden/unladen)



Lifting height of fork
115mm



Lifting speed
17/22mm/s (laden/unladen)



Turning radius
1350mm



CE-certified
Whole vehicle



Main features

Flexible operation

- Minimum turning radius of only 1350 mm, offering exceptional maneuverability and easily adapting to operation in narrow aisles.

All-terrain adaptation

- Optional suspended stabilizer wheel, enhancing the passability on different road surfaces while effectively extending the service life of tires.

Robustness and reliability

- Integrally forged forks proven through a rigorous 200-hour, fully-loaded endurance test to ensure safe and reliable operation.

Convenient control

- Basic standard level with optional smart/multi-function magnetic level for intuitive operation, catering to diverse needs.

Quick battery change and long endurance

- Battery with standard 48V/10Ah (1.5 tons), 48V/15Ah (2 tons);
- Optional 48V/20Ah, 48V/25Ah;
- Easy removal and installation of battery, which can be replaced in 5 seconds.

Easy to maintain

- Service-friendly design: Logical layout with quick-access panels to significantly reduce maintenance time and difficulty.

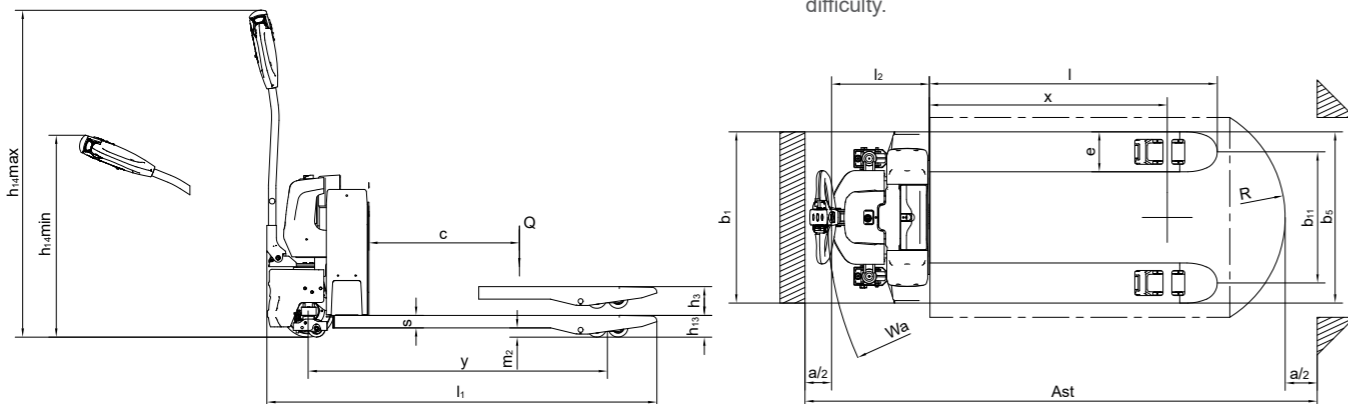


Table of Parameters

Class	Unit	Parameter
Characteristic	1.1	Manufacturer / SANY SANY
	1.2	Model / SCB15W SCB20W
	1.3	Drive mode / Electric driven
	1.4	Mode of operation / Walkie
	1.5	Rated load capacity Q (kg) / 1500 2000
	1.6	Load center distance c (mm) / 600
	1.8	Front clearance (fork lifting/lowering) x (mm) / 880/950
	1.9	Wheelbase (fork lifting/lowering) y (mm) / 1130/1200
	Weight	2.1
2.2		Axle load (laden) (driving side/bearing side) kg / 840/803 1030/1115
2.3		Axle load (unladen) (driving side/bearing side) kg / 113/30 115/30
Tire	3.1	Tire / Polyurethane wheel
	3.2.1	Tire size, driving side mm / $\Phi 210 \times 75$
	3.3.1	Tire size, bearing side mm / $\Phi 80 \times 70$
	3.5	Number of wheels, driving side/bearing side (x= driving wheel) / 1x+1/4
	3.7.1	Wheel track, bearing side b_{11} (mm) / 390/525
Dimension	4.4	Lifting height h_3 (mm) / 115
	4.9	Minimum/maximum height of the lever during operation h_{14} (mm) / 720/1175
	4.15	Minimum ground clearance of fork h_{13} (mm) / 85
	4.19	Overall length (including fork) l_1 (mm) / 1560
	4.2	Body length (excluding fork) l_2 (mm) / 410
	4.21	Body width b_1 (mm) / 550/685
	4.22	Fork size s/e/l (mm) / 50/160/1150
	4.25	Outer spacing of fork b_5 (mm) / 550/685
	4.32	Minimum ground clearance of wheelbase center m_2 (mm) / 35
	4.34.1	Aisle width for 1000×1200 pallet (1200 cross the fork) A_{st} (mm) / 2152
		Aisle width for 800×1200 pallet (1200 along the fork) A_{st} (mm) / 2022
	4.35	Turning radius W_a (mm) / 1350
	Performance	5.1
5.2		Lifting speed, laden/unladen mm/s / 17/22
5.3		Lowering speed, laden/unladen mm/s / 40/26
5.4		Maximum gradeability, laden/unladen % / 6/10
Drive	5.1	Service brake / Electromagnetic brake
	6.1	Drive motor, S2 30min kW / 0.9
	6.2	Increased motor power, S3 15% kW / 0.5
	6.4	Battery voltage/capacity V/Ah / 48/10 48/15
	6.5	Weight of battery ($\pm 5\%$) kg / 6 8.4
Others	8.1	Drive control mode / DC speed control
	10.7	Operator ear noise level dB (A) / 65

SCB20L

Electric Walkie Pallet Truck(Economy)



Rated load
2t



Travel speed
6/6km/h (laden/unladen)



Gradeability
10%/18% (laden/unladen)



Lifting height of fork
120mm



Lifting speed
65/90mm/s (laden/unladen)



Turning radius
1510mm



CE-certified
Whole vehicle



Main features

High Efficiency

- Gradeability up to 10% (laden);
- Fast lifting speed: 65mm/s (laden), 90mm/s (unladen), improving working efficiency.

Flexible operation

- Minimum turning radius of only 1510 mm, offering exceptional maneuverability and easily adapting to operation in narrow aisles.

All-terrain adaptation

- Suspended stabilizer wheel equipped, enhancing the passability on different road surfaces while effectively extending the service life of tires.

Stable and reliable

- Five-point chassis support system with dual lifting cylinders, ensuring exceptionally smooth lifting operation and safe, reliable performance.

Long endurance

- 24V/200Ah battery provided to delivering approximately 8 hours of continuous runtime to meet the demands of prolonged operation.

Convenient maintenance

- Service-friendly design: Logical layout with quick-access panels allows for easy maintenance of all core components.

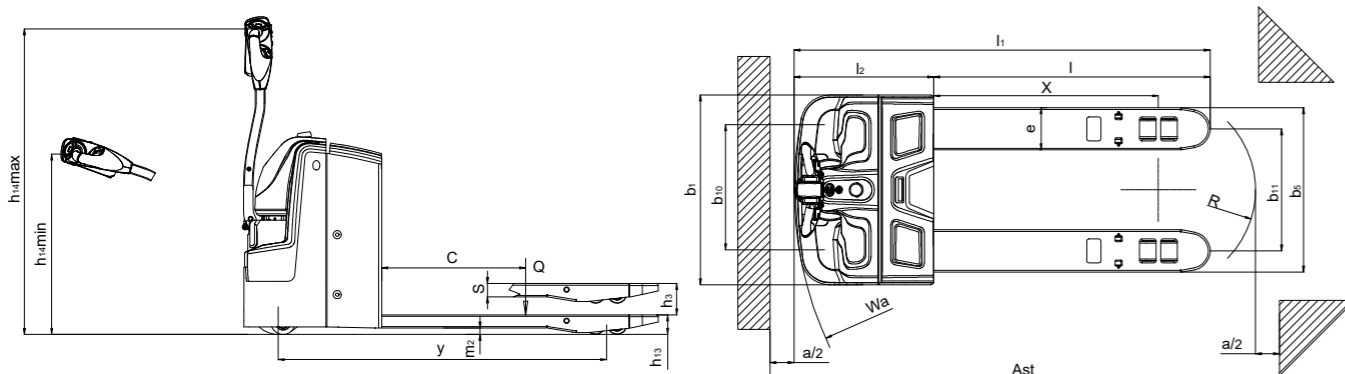


Table of Parameters

Class	Unit	Parameter
Characteristic	1.1	Manufacturer / SANY
	1.2	Model / SCB20L
	1.3	Drive mode / Electric driven
	1.4	Mode of operation / Walkie
	1.5	Rated load capacity Q (kg) / 2000
	1.6	Load center distance c (mm) / 600
Weight	1.8	Front clearance (fork lifting/lowering) x (mm) / 857/925
	1.9	Wheelbase (fork lifting/lowering) y (mm) / 1290/1360
	2.1	Dead weight with battery / kg / 450
Tire	2.2	Wheel load (laden), driving wheel/bearing wheel / kg / 1097/1353
	2.3	Wheel load (unladen), driving wheel/bearing wheel / kg / 342/108
	3.1	Tire / / Polyurethane
	3.2	Tire size, driving wheel / mm / $\Phi 230 \times 75$
	3.3	Tire size, bearing wheel / mm / $\Phi 80 \times 80$
	3.4	Tire size, auxiliary wheel / mm / $\Phi 100 \times 40$
Dimension	3.5	Number of wheels (x= driving wheel driving side/bearing side) / / 1x+2/4
	3.6	Wheel track, driving side / mm / 524
	3.7	Wheel track, bearing side / mm / 509
	4.4	Lifting height / mm / 120
	4.9	Height when lever adjusted to the highest operating position (min/max) / mm / 906/1252
	4.15	Minimum ground clearance of fork / mm / 82
	4.19	Overall length (including fork) / mm / 1735
	4.20	Body length (excluding fork) / mm / 575
	4.21	Body width / mm / 790
	4.22	Fork size / mm / 50/176/1150
	4.25	Outer spacing of fork / mm / 685
	4.32	Minimum ground clearance of wheelbase center / mm / 30
	4.34	Aisle width, pallet 1000×1200 / mm / 2325/2313
	4.34	Aisle width, pallet 800×1200 / mm / 2235/2193
	4.35	Turning radius / mm / 1510
Performance	5.1	Travel speed, laden/unladen / km/h / 6.0/6.0
	5.2	Lifting speed, laden/unladen / mm/s / 65/90
	5.3	Lowering speed, laden/unladen / mm/s / 80/58
	5.8	Maximum gradeability, laden/unladen / % / 10/18
	5.10	Service brake / / Electromagnetic brake
	Drive	6.1
6.2		Increased motor power, S3 15% / kW / 2.2
6.3		Battery / / Lithium battery
6.4		Battery voltage/capacity / V/Ah / 24/200
6.5		Weight of battery ($\pm 5\%$) / kg / 67
6.6		DIN EN 16796 energy consumption / kWh/h / 0.4
Others	8.1	Drive control mode / / AC
	10.7	Sound pressure level at driving position / dB (A) / 68

SCB20/25/30A6

Electric Pallet Truck



Rated load
2/2.5/3t



Travel speed
9/10km/h (laden/unladen)



Gradeability
10%/16% (laden/unladen)



Lifting height of fork
120 mm



Lifting speed
62/75mm/s (laden/unladen)



Turning radius
1650/2060 mm



CE-certified
Whole vehicle



Main features

Efficient and powerful

- Industry-first permanent magnet synchronous motor in an integrated motor-drive unit, delivering a significant boost in energy efficiency;
- Strong power: maximum speed ≥ 10 km/h (unladen), maximum speed ≥ 9 km/h (laden); 10% (laden), 16% (unladen);
- Long endurance, fast charging: equipped with 48V100Ah battery, charging for 2 hours for sustainable operation for 8 hours.

Full-scene adaptation

- Key components (motor, controller, brake, bearings, etc.) are rated IP67 for high protection, ensuring reliable operation in harsh conditions;
- Exceptional maneuverability: Feature a small turning radius with only 1650 mm in length with the pedals folded, offering strong adaptability to confined spaces;
- Suspended chassis with a pressurized lift cylinder design for easy adaptation to varying ground conditions and excellent terrain passability.

Safety

- Automotive-grade lithium iron phosphate battery and battery management system (BMS) adopted, being safe and reliable;
- Automotive-grade VCU electrical architecture adopted, with overload and low battery protection functions.

Stable and Reliable

- Five-point support structure with balanced force for stable and reliable driving;
- Double lifting cylinder design for smooth lifting;
- Cast steel fork tip and guide steel wheel for strong wear resistance, impact resistance;
- Integrated fork torsion bar structure for uniform force and stable handling (laden).

Convenient maintenance and comfortable experience

- Service-friendly design: Logical layout with quick-access panels allows for easy maintenance of core components;
- Designed for comfort with an ergonomic, adjustable steering tiller (3 positions), a two-position arm guard, and a dual-spring dampened pedal.

Smart Connectivity

- Equipped with T-BOX and cloud platform to realize intelligent vehicle monitoring and management and support real-time interaction between vehicle and cloud data.

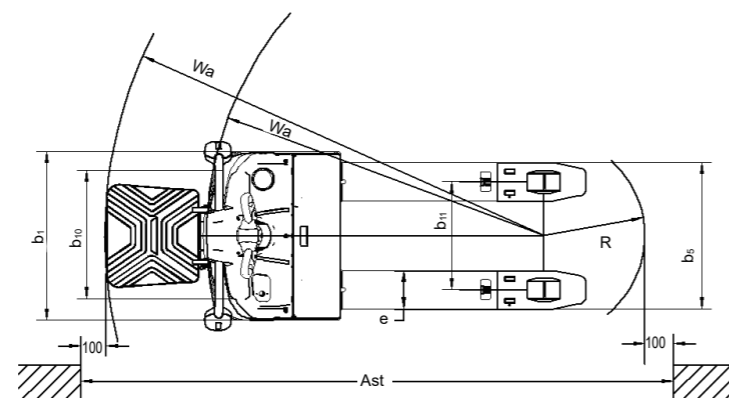
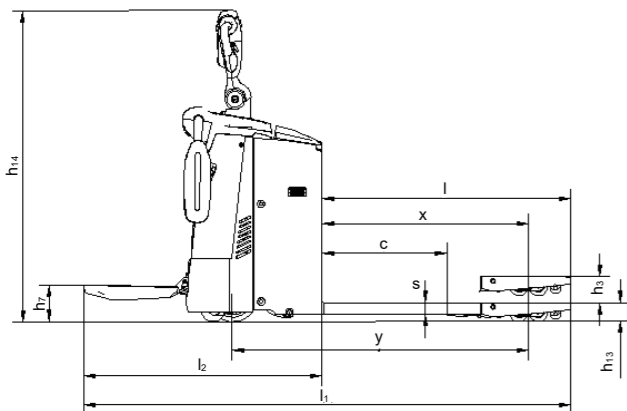


Table of Parameters

Class	Unit	Parameter				
Characteristic	1.1	Manufacturer	SANY			
	1.2	Model	SCB20A6	SCB25A6	SCB30A6	
	1.3	Drive mode	Electric driven			
	1.4	Mode of operation	Stand-on			
	1.5	Rated load capacity	Q (kg)	2000	2500	3000
	1.6	Load center distance	c (mm)	600		
	1.8	Front clearance (fork lifting/lowering)	x (mm)	965		
	1.9	Wheel base	y (mm)	1360		
	Weight	2.1	Dead weight	kg	650	660
2.2		Axle load (laden) (driving side/bearing side)	kg	945/1705	1105/2055	1210/2450
2.3		Axle load (unladen) (driving side/bearing side)	kg	530/120	535/125	535/125
Tire	3.1	Tire	Polyurethane (PU)			
	3.2	Tire size, driving side	Φ250×75			
	3.3	Tire size, bearing side	Φ85×80			
	3.4	Tire size, auxiliary wheel	Φ115×50			
	3.5	Number of wheels, driving side/bearing side (x=driving wheel)	1x+2/4			
	3.6	Wheel track, driving side	b ₁₀ (mm)	560		
	3.7	Wheel track, bearing side	b ₁₁ (mm)	370		
Dimension	4.4	Lifting height	h ₃ (mm)	120		
	4.8	Height of driving position (when opened)	h ₇ (mm)	190		
	4.9	Height when lever adjusted to the highest operating position (min/max)	h ₁₄ (mm)	1330/1530		
	4.10	Height when lever adjusted to the lowest operating position (min/max)	h ₁₄ (mm)	1230/1430		
	4.15	Height of fork above the ground after lowering to the bottom	h ₁₃ (mm)	85		
	4.19	Overall Length (with forks) (operable length / folded length)	l ₁ (mm)	1860/2270		
	4.20	Body Length (without forks) (operable length / folded length)	l ₂ (mm)	710/1120		
	4.21	Body width	b ₁ (mm)	790		
	4.22	Fork size	s/e/l (mm)	55/180/1150		
	4.25	Outer spacing of fork	b ₅ (mm)	550/685		
	4.32	Ground clearance of wheelbase center	m ₂ (mm)	30		
4.33	Aisle width, 1000×1200 pallet (cross the fork)	Ast (mm)	2450			
4.34	Aisle width, 800×1200 pallet (along the fork)	Ast (mm)	2315			
4.35	Turning radius (operable length / folded length)	Wa (mm)	1650/2060			
Performance	5.1	Travel speed, laden/unladen	km/h	9.0/10.0		
	5.2	Lifting speed, laden/unladen	mm/s	62/75		
	5.3	Lowering speed, laden/unladen	mm/s	85/72		
	5.8	Maximum gradeability, laden/unladen	%	10/16		
	5.10	Service brake	/	Electromagnetic brake		
Drive	6.1	Drive motor power, S2 60min	kW	2.5		
	6.2	Increased motor power, S3 15%	kW	2.2	4	4
	6.3	Battery	Lithium battery			
	6.4	Battery voltage/capacity	V/Ah	48/100		
	6.5	Weight of battery (±5%)	kg	95		
	6.6	DIN EN 16796 energy consumption	kWh/h	0.5	0.6	0.7
Others	8.4	Sound pressure level at driving position	dB (A)	< 75		

SCD15W

Electric Stacker (Economy Model)



Rated load
1.5t



Travel speed
4.5/5km/h (laden/unladen)



Gradeability
6%/15% (laden/unladen)



Lifting height of fork
Standard 2m~3.5m (customizable)



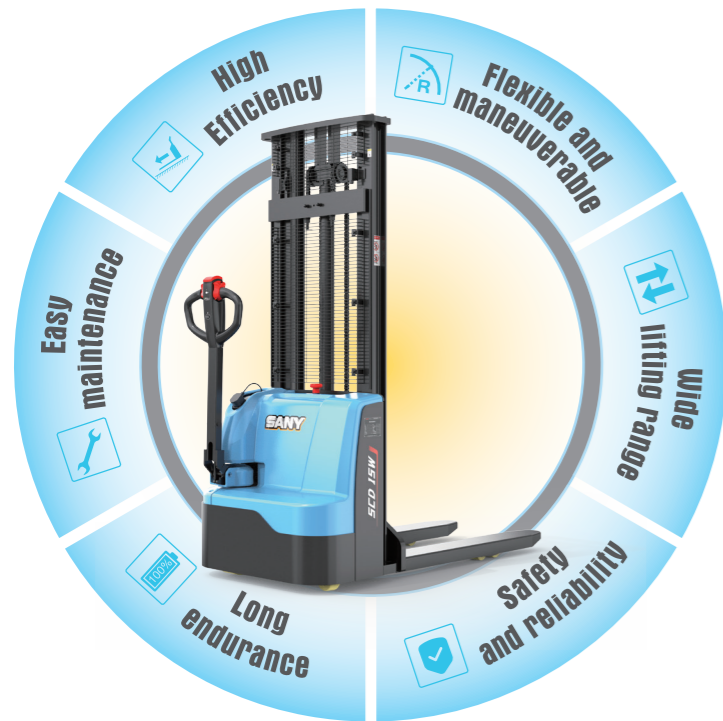
Lifting speed
95/140mm/s (laden/unladen)



Turning radius
1360mm



CE-certified
Whole vehicle



Main features

High Efficiency

- Travel speed of 4.5km/h (laden), rapid lifting speed: 95mm/s (laden), 140mm/s (unladen), significantly improving the working efficiency.

Flexible and maneuverable

- Minimum turning radius of only 1360 mm for effortless operation in narrow aisles and compact storage spaces.

Wide lifting range

- Maximum lifting height of the standard gantry is 3.5 meters, which can meet most stacking height and access requirements.

Safety and reliability

- Robust chassis features a four-point support structure, combined with a 10H-section steel channel mast, delivering exceptional overall rigidity, and ensuring smoother and safer operation.

Long endurance

- Standard 48V/67Ah battery to deliver 6 to 8 hours of continuous runtime, meeting the demands of a full work shift.

Easy maintenance

- Service-friendly design: Logical layout with quick-access panels allows for easy maintenance of core components.

Load Curve Diagram

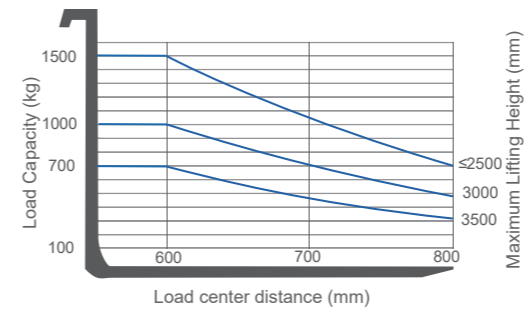
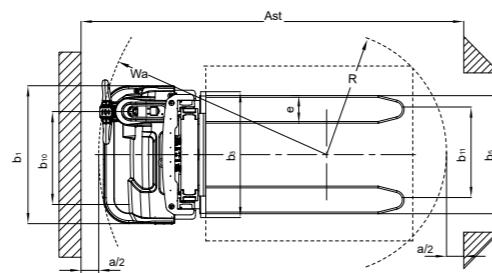
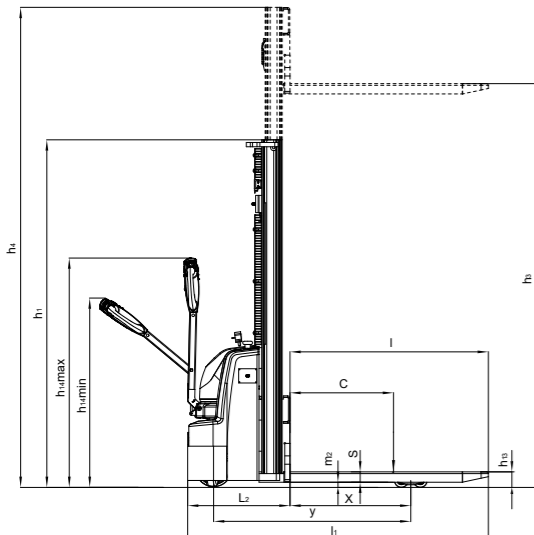


Table of Mast Parameters

Type of mast	Lifting height h_3 (mm)	Height when the gantry is retracted h_1 (mm)	Maximum height of mast during operation h_4 (mm)
Two-stage wide-view Mast	2000	1515	2498
	2500	1765	2998
	3000	2015	3498
	3500	2265	3998

Table of Parameters

Class	Item	Unit	Parameter	
Characteristic	1.1	Manufacturer	/	
	1.2	Model	/	
	1.3	Drive mode	/	
	1.4	Mode of operation	/	
	1.5	Rated load capacity	Q (kg)	
	1.6	Load center distance	c (mm)	
	1.8	Front overhang	x (mm)	
	1.9	Wheel base	y (mm)	
	Weight	2.1	Dead weight (including battery)	kg
2.2		Axle load (laden) (driving side/bearing side)	kg	
2.3		Axle load (unladen) (driving side/bearing side)	kg	
Tire	3.1	Tire	/	
	3.2.1	Tire size, driving side	mm	
	3.3.1	Tire size, bearing side	mm	
	3.4	Tire size, auxiliary wheel	mm	
	3.5	Number of wheels, driving side/bearing side (x= driving wheel)		
	3.6.1	Wheel track, driving side	b_{10} (mm)	
	3.7.1	Wheel track, bearing side	b_{11} (mm)	
	4.2	Height when the gantry is retracted	h_1 (mm)	
	4.3	Free lift	h_2 (mm)	
Dimension	4.4	Lifting height	h_3 (mm)	
	4.5	Maximum height of mast during operation	h_4 (mm)	
	4.9	Minimum/maximum height of the lever during operation	h_{14} (mm)	
	4.15	Minimum ground clearance of fork	h_{13} (mm)	
	4.19	Overall length (including fork)	l_1 (mm)	
	4.2	Body length (excluding fork)	l_2 (mm)	
	4.21	Body width	b_1 (mm)	
	4.22	Fork size	s/e/l (mm)	
	4.25	Outer spacing of fork	b_5 (mm)	
	4.32	Minimum ground clearance of wheelbase center	m_2 (mm)	
	4.34.1	Aisle width for 1000×1200 pallet (1200 cross the fork)	A_{st} (mm)	
	4.34.2	Aisle width for 800×1200 pallet (1200 along the fork)	A_{st} (mm)	
	4.35	Turning radius	W_a (mm)	
	Performance	5.1	Driving speed, laden/unladen	km/h
		5.2	Lifting speed, laden/unladen	mm/s
5.3		Lowering speed, laden/unladen	mm/s	
5.4		Maximum gradeability, laden/unladen	%	
Drive	6.1	Service brake	/	
	6.1	Drive motor, S2 60min	kW	
	6.2	Increased motor power, S3 15%	kW	
	6.4	Battery voltage/capacity	V/Ah	
	6.5	Weight of battery (±5%)	kg	
Others	8.1	Drive control mode	/	
	10.7	Operator ear noise level	dB (A)	



SCD16L

Electric Stacker (Standard)



Rated load
1.6t



Travel speed
6/6km/h (laden/unladen)



Gradeability
6%/15% (laden/unladen)



Lifting height of fork
Standard 2.5m~5.6m (customizable)



Lifting speed
120/220mm/s (laden/unladen)



Turning radius
1510mm



CE-certified
Whole vehicle



Main features

Efficient and powerful

- Travel speed of 6km/h (laden), rapid lifting speed: 120mm/s (laden), 220mm/s (unladen), significantly improving the efficiency of handling and storage.

Flexible and maneuverable

- Minimum turning radius of only 1510 mm for effortless operation in narrow aisles and compact storage spaces.

Excellent lifting performance

- The maximum lifting height of the standard mast can reach 5.6 meters, meeting storage and access requirements for medium and low shelves.

Stable and reliable

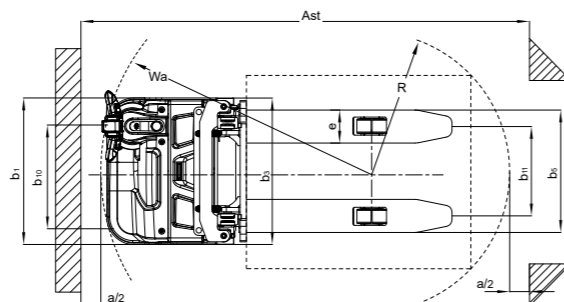
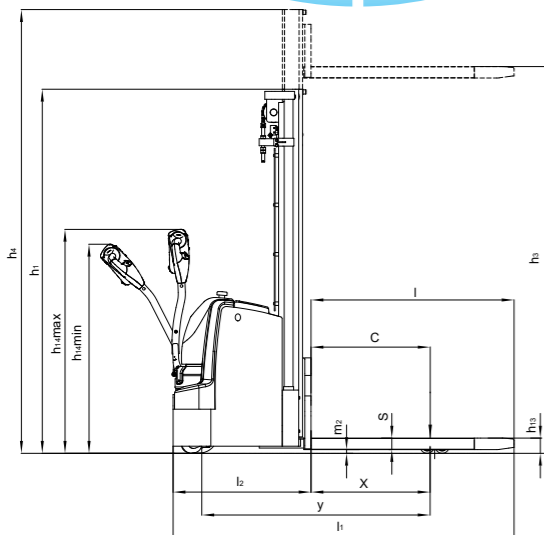
- Robust chassis features a four-point support structure, combined with a 12H-section steel channel mast, delivering exceptional overall rigidity, and ensuring smoother and safer operation.

Long endurance

- Equipped with 24V200Ah battery, which can work for 6-8 hours continuously, meeting the battery life requirements under most working conditions.

Easy maintenance

- Service-friendly design: Logical layout with quick-access panels allows for easy maintenance of key components.



Load Curve Diagram

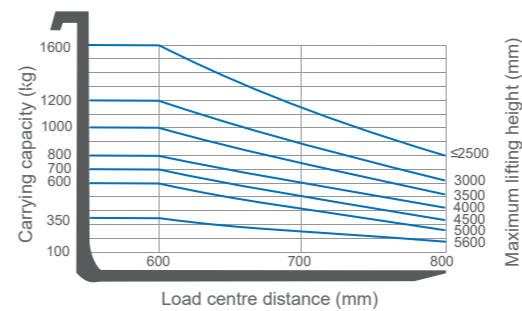


Table of Mast Parameters

Type of mast	Lifting height h_3 (mm)	Height when the gantry is retracted h_1 (mm)	Free lift h_2 (mm)	Maximum height of mast during operation h_4 (mm)
Two-stage wide-view mast a	2500	1765	90	2985
	2700	1915	90	3235
	3000	2065	90	3535
	3300	2215	90	3835
Two-stage fully free mast	3600	2365	90	4135
	2700	1900	1395	3390
	3000	2065	1560	3555
Three-stage full free mast	3300	2230	1725	3720
	4000	1900	1395	4550
	4500	2065	1560	5045
	5000	2230	1725	5500
	5600	2430	1925	6100

Table of Parameters

Class	Item	Unit	Parameter
Characteristic	1.1	/	Manufacturer
	1.2	/	Model
	1.3	/	Drive mode
	1.4	/	Mode of operation
	1.5	Q (kg)	Rated load capacity
	1.6	c (mm)	Load center distance
	1.8	x (mm)	Front overhang
	1.9	y (mm)	Wheel base
	Weight	2.1	kg
2.2		kg	Axle load (laden) (driving side/bearing side)
2.3		kg	Axle load (unladen) (driving side/bearing side)
Tire	3.1	/	Tire
	3.2.1	mm	Tire size, driving side
	3.3.1	mm	Tire size, bearing side
	3.4	mm	Tire size, auxiliary wheel
	3.5	/	Number of wheels, driving side/bearing side (x= driving wheel)
	3.6.1	b ₁₀ (mm)	Wheel track, driving side
Dimension	3.7.1	b ₁₁ (mm)	Wheel track, bearing side
	4.2	h ₁ (mm)	Height when the gantry is retracted
	4.3	h ₂ (mm)	Free lift
	4.4	h ₃ (mm)	Lifting height
	4.5	h ₄ (mm)	Maximum height of mast during operation
	4.9	h ₁₄ (mm)	Minimum/maximum height of the lever during operation
	4.15	h ₁₃ (mm)	Minimum ground clearance of fork
	4.19	l ₁ (mm)	Overall length (including fork)
	4.2	l ₂ (mm)	Body length (excluding fork)
	4.2.1	b ₁ (mm)	Body width
	4.2.2	s/e/l (mm)	Fork size
	4.2.5	b ₅ (mm)	Outer spacing of fork
	4.3.2	m ₂ (mm)	Minimum ground clearance of wheelbase center
	4.34.1	Ast (mm)	Aisle width for 1000×1200 pallet (1200 cross the fork)
	4.34.2	Ast (mm)	Aisle width for 800×1200 pallet (1200 along the fork)
4.35	Wa (mm)	Turning radius	
Performance	5.1	km/h	Driving speed, laden/unladen
	5.2	mm/s	Lifting speed, laden/unladen
	5.3	mm/s	Lowering speed, laden/unladen
	5.4	%	Maximum gradeability, laden/unladen
Drive	5.1	/	Service brake
	6.1	kW	Drive motor, S2 60min
	6.2	kW	Increased motor power, S3 15%
	6.4	V/Ah	Battery voltage/capacity
	6.5	kg	Weight of battery (±5%)
Others	8.1	/	Drive control mode
	10.7	dB (A)	Operator ear noise level

SCD16/20A6

Electric Pallet Stacker



Rated load
1.6/2t



Travel speed
7/7km/h (laden/unladen)



Gradeability
8%/16% (laden/unladen)



Lifting height of fork
Standard 2.5m~5.6m
(customizable)



Lifting speed
130/200mm/s (laden/
unladen)



Turning radius
1595/2035mm



CE-certified
Whole vehicle



Main features

Efficient and all-round

- Industry-first permanent magnet synchronous motor in an integrated motor-drive unit, leading the industry in energy efficiency;
- Strong power: maximum speed ≥ 7 km/h (unladen / laden), 8% (laden), 16% (unladen);
- Long-lasting power and rapid recharge: Powered by a 48V 100Ah battery, it achieves a full charge in just 2 hours, delivering 6-8 hours of continuous operation.

Full-scene adaptation

- Key components (motor, controller, brake, bearings, etc.) are rated IP67 for high protection, ensuring reliable operation in damp and dusty conditions;
- Exceptional maneuverability: Feature a small turning radius with only 1595 mm in length with the pedals folded, allowing for free movement in confined spaces;
- Suspended chassis worked with a pressurized lift cylinder design for easy adaptation to varying ground conditions and excellent terrain passability.

Safety and reliability

- Automotive-grade lithium iron phosphate battery and battery management system (BMS) adopted, being safe and stable;
- Automotive-grade VCU electrical architecture adopted, with overload and low battery protection to safeguard the entire operation process.

Sturdy and durable

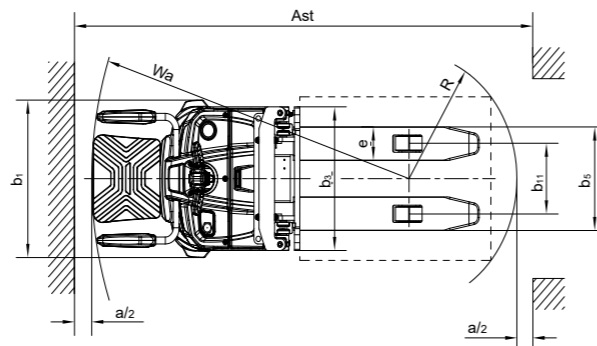
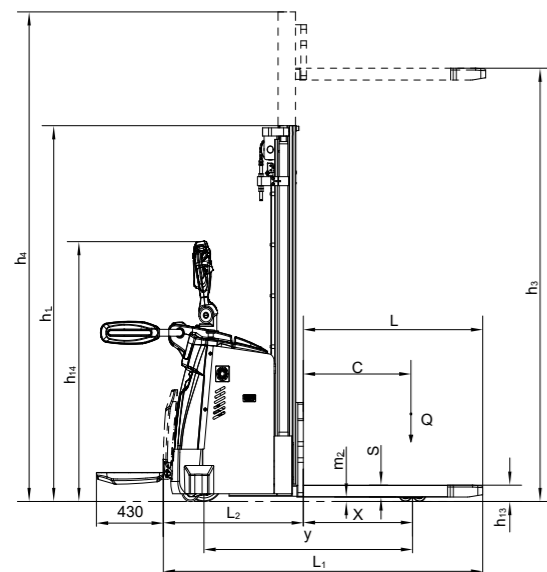
- Five-point support structure with balanced force for stable and reliable driving and operation;
- Double lifting cylinder system, ensuring smooth and stable lifting process of goods;
- Mast is made of 12H channel steel, with strong structure and excellent rigidity.

Easy maintenance and comfortable experience

- Service-friendly design: Logical layout with quick-access panels allows for easy maintenance of key components;
- Comprehensive ergonomic design: The operator compartment features a 3-position adjustable steering tiller, 2-position adjustable arm guards, and a floorboard equipped with dual-spring shock absorption. This fully adjustable system accommodates a wide range of operators and significantly reduces ergonomic fatigue.

Smart Connectivity

- Integrated with T-BOX and cloud platform to realize intelligent monitoring and management and support real-time interaction between vehicle and cloud data.



Load Curve Diagram

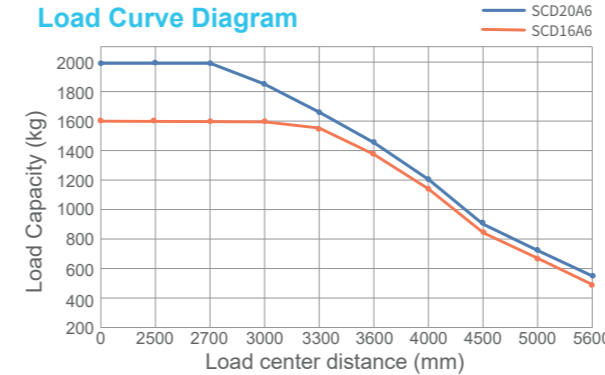


Table of Mast Parameters

Type of mast	Lifting height h_3 (mm)	Height with mast retracted h_1 (mm)	Free lift h_2 (mm)	Maximum height of mast during operation h_4 (mm)
Two-stage wide-view mast	2500	1765	90	2985
	2700	1915	90	3235
	3000	2065	90	3535
	3300	2215	90	3835
Two-stage fully free mast	3600	2365	90	4135
	2700	1900	1395	3390
	3000	2065	1560	3555
Three-stage full free mast	3300	2230	1725	3720
	4000	1900	1395	4550
	4500	2065	1560	5045
	5000	2230	1725	5500
	5600	2430	1925	6100

Table of Parameters

Class	Unit	Parameter
Characteristic	1.1	Manufacturer / SANY
	1.2	Model / SCD16A6 SCD20A6
	1.3	Drive mode / Electric driven
	1.4	Mode of operation / Stand-on
	1.5	Rated load capacity / Q (kg) 1600 2000
Weight	1.6	Load center distance / c (mm) 600
	1.8	Front overhang / x (mm) 700
	1.9	Wheel base / y (mm) 1337
Tire	2.1	Dead weight (including battery) / kg 1350 1400
	2.2	Axle load (laden) (driving side/bearing side) / kg 1065/2285 1085/2315
	2.3	Axle load (unladen) (driving side/bearing side) / kg 955/395 985/415
	3.1	Tire / Polyurethane (PU)
	3.2.1	Tire size, driving side / mm $\Phi 250 \times 75$
Dimension	3.3.1	Tire size, bearing side / mm $\Phi 85 \times 80$
	3.4	Tire size, auxiliary wheel / mm $\Phi 115 \times 55$
	3.5	Number of wheels, driving side/bearing side (x= driving wheel) / 1x+2/4
	3.6.1	Wheel track, driving side / b_{10} (mm) 660
	3.7.1	Wheel track, bearing side / b_{11} (mm) 390 (505)
	4.2	Height when the gantry is retracted / h_1 (mm) 2066
	4.3	Free lift / h_2 (mm) 90
	4.4	Lifting height / h_3 (mm) 3030
	4.5	Maximum height of mast during operation / h_4 (mm) 3535
	4.9	Height when lever adjusted to the highest operating position (min/max) / h_{14} (mm) 1330/1530
	Height when lever adjusted to the lowest operating position (min/max) / h_{14} (mm) 1230/1430	
Performance	4.15	Minimum ground clearance of fork / h_{13} (mm) 90
	4.19	Overall Length (with forks) (operable length / folded length) / l_1 (mm) 2045(2475)
	4.20	Body Length (without forks) (operable length / folded length) / l_2 (mm) 895(1325)
	4.21	Body width / b_1 (mm) 865
	4.22	Fork size / s/e/l (mm) 65x185x1150(1220)
	4.25	Outer spacing of fork / b_5 (mm) 570(685)
	4.32	Minimum ground clearance of wheelbase center / m_2 (mm) 29
	4.34.1	Aisle width for 1000x1200 pallet (1200 cross the fork) / A_{st} (mm) 2315/2755
	4.34.2	Aisle width, 800 x 1200 pallets (1200 along the fork) / A_{st} (mm) 2253/2693
	4.35	Turning radius (operable length / folded length) / W_a (mm) 1595/2035
Drive	5.1	Driving speed, laden/unladen / km/h 7.0/7.0
	5.2	Lifting speed, laden/unladen / mm/s 130/200
	5.3	Lowering speed, laden/unladen / mm/s 280/220 (For triplex mast, the lowering speed of the front cylinder is 55)
	5.4	Maximum gradeability, laden/unladen / % 8/16
	5.10	Service brake / Electromagnetic brake
Others	6.1	Drive motor, S2 60min / kW 2.5
	6.2	Increased motor power, S3 15% / kW 3
	6.4	Battery voltage/capacity / V/Ah 48/100
	6.5	Weight of battery ($\pm 5\%$) / kg 66
	8.1	Drive control mode / AC
	10.7	Operator ear noise level / dB (A) 72